



LEDPRO10



LEDPRO20



LEDPRO30



LEDPROSL



**WIRE FREE**

LEDPRORFKB



**WIRE FREE**

LEDPROFOB

**LEDPRO10B**

10W Professional Rewireable Floodlight – 650 lumens

- Rewireable with easy access screw terminals with link terminal for common accessories control.
- Powerful 10W LED energy saving floodlight.
- 650 lumens of cool white light (colour 5000k).
- Polycarbonate front lens with prismatic centre for enhanced light control.
- Fully polycarbonate front lens ideal for food preparation areas and grain stores.
- Plug & Play PIR option with linkable control (optional extra).
- Plug & Play Photocell option with linkable control (optional extra).
- Easy install bracket – enables floodlight fixing screws to be pre-fitted.
- Installer friendly captive terminal cover screws 2x PG11 glands supplied, suitable for 1.5mm twin and earth flat cable.
- IP65 weatherproof rating.
- Driverless ACLED technology.
- Long life – up to 30,000 hours for low maintenance.
- UK and European registered design.

**LEDPRO10WH**

White Version – 750 lumens

- Powerful 10W LED energy saving floodlight.
- 750 lumens of cool white light (colour 5000k).

**LEDPRO20B**

20W Professional Rewireable Floodlight – 1400 lumens

- Powerful 20W LED energy saving floodlight.
- 1400 lumens of cool white light (colour 5000k).
- Plug & Play PIR option with linkable control (optional extra).
- Plug & Play Photocell option with linkable control (optional extra).
- IP65 weatherproof rating.

**LEDPRO20WH**

White Version – 1500 lumens

- Powerful 20W LED energy saving floodlight.
- 1500 lumens of cool white light (colour 5000k).

**LEDPRO30B**

30W Professional Rewireable Floodlight – 2050 lumens

- Powerful 30W LED energy saving floodlight.
- 2050 lumens of cool white light (colour 5000k).
- Plug & Play PIR option with linkable control (optional extra).
- Plug & Play Photocell option with linkable control (optional extra).
- IP65 weatherproof rating.

**LEDPRO30WH**

White Version – 2100 lumens

- Powerful 30W LED energy saving floodlight.
- 2100 lumens of cool white light (colour 5000k).



See page 83 for product specifications. All these products carry a 3 year guarantee.

**LEDPROSLB**

Dedicated PIR Detector for LEDPRO Range

Simply replaces the terminal cover and plugs into the LEDPRO Floodlight offering a 140W LED PIR with a 180° 12m detection range. Features include tilt and rotate adjustable head, timed ON adjustable control and manual override.

- Dedicated 140W LED PIR for use with Timeguard LEDPRO floodlights.
- Maximum Switchable Load: LED lamp – 140W; halogen lamp – 1000W; CFL – 200W; fluorescent tube w/o PF correction – 500W.
- Simply replaces the terminal cover and plugs in to the LEDPRO floodlight – no extra cabling necessary.
- Installer friendly captive terminal cover screws 2x cable entries suitable for PG11 gland (glands not supplied).
- 12 metre, 180° detection.
- Tilt and rotate adjustable head for accurate reliable detection.
- 3 seconds – 18 minutes timed duration (adjustable).
- Photocell sensor (adjustable) and manual override function.
- IP55 weatherproof rating.

**LEDPROSLWH**

White Version

**LEDPRORFKB**

Dedicated LEDPRO RF Remote Kit for LEDPRO Range – Black

- Dedicated 140W LED PIR detector for use with all Timeguard LEDPRO floodlights.
- RF Fob control eliminates the need for hard wired PIR override.
- Simply replaces the terminal cover and plugs into the LEDPRO floodlight – no extra cabling necessary.
- Installer friendly captive terminal cover screws 2x cable entries suitable for PG11 gland (glands not supplied).
- 180° up to 12 metre detection.
- Pan and tilt feature.
- Total PIR switching: 140W LED Lighting, 1000W Halogen Lighting, 500W Fluorescent Tube w/o PF correction, 200W CFL Lighting.
- Adjustable time setting 3 Seconds – 18 Minutes.
- Adjustable 2 – 1000 LUX setting.
- RF Fob control, up to 100m handheld range.
- Fob can also fit into a standard indoor/outdoor wall switch, eliminating the need to hard wire the PIR override switch.
- IP55 weatherproof rating.

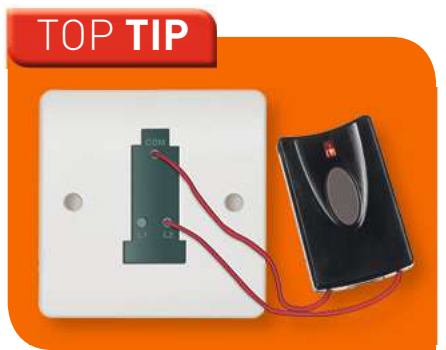
**LEDPRORFKWH**

White Version

**LEDPROFOB**

LEDPRO RF Remote Fob

- Eliminates the need for hard wired PIR override.
- RF Key Fob remote control – 100m range.
- Can be surface mounted and used as a wall switch – 10m range.
- Up to 6 remotes can be used with one PIR.
- Auto learn.
- Battery: 3V (1x CR2032).
- IP44 weatherproof rating.
- Compatible with Timeguard PIR sensor models: LEDPRORFKB, LEDPRORFKWH, SLB2300RF and SLW2300RF.



LEDPRO50

**LEDPRO50B**

50W Professional Rewireable Floodlight – 3500 lumens

- Powerful 50W LED Energy Saving Floodlight.
- 3500 lumens of cool white light (colour 5000k).
- Plug & Play PIR option with linkable control (optional extra).
- Plug & Play Photocell option with linkable control (optional extra).
- IP65 weatherproof rating.

**LEDPRO50WH**

White Version – 3600 lumens

- Powerful 50W LED Energy Saving Floodlight.
- 3600 lumens of cool white light (colour 5000k).



**LEDPROPCB**

Dedicated Photocell for LEDPRO Range

- Dedicated 140W LED Photocell for use with Timeguard LEDPRO Floodlights.
- Maximum Switchable Load: LED lamp – 140W; halogen lamp – 1000W; CFL – 200W; fluorescent tube w/o PF correction – 500W.
- Installer friendly captive terminal cover screws 2x cable entries suitable for PG11 gland (glands not supplied).

**LEDPROPCWH**

White Version

- Simply replaces the terminal cover and plugs in to the LEDPRO floodlight – no extra cabling necessary.
- 2, 4, 6 or 8 hours timed on duration or continuous Dusk to Dawn (adjustable).
- Adjustable LUX setting.
- IP55 weatherproof rating.



LEDPROPC